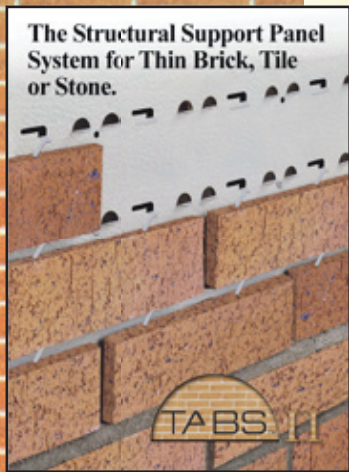




TI
SYSTEM

- Insulated
- G-90 Galvanized
- Thickness (.018)
- Mortar Tie System
- Full 20 Year Warranty



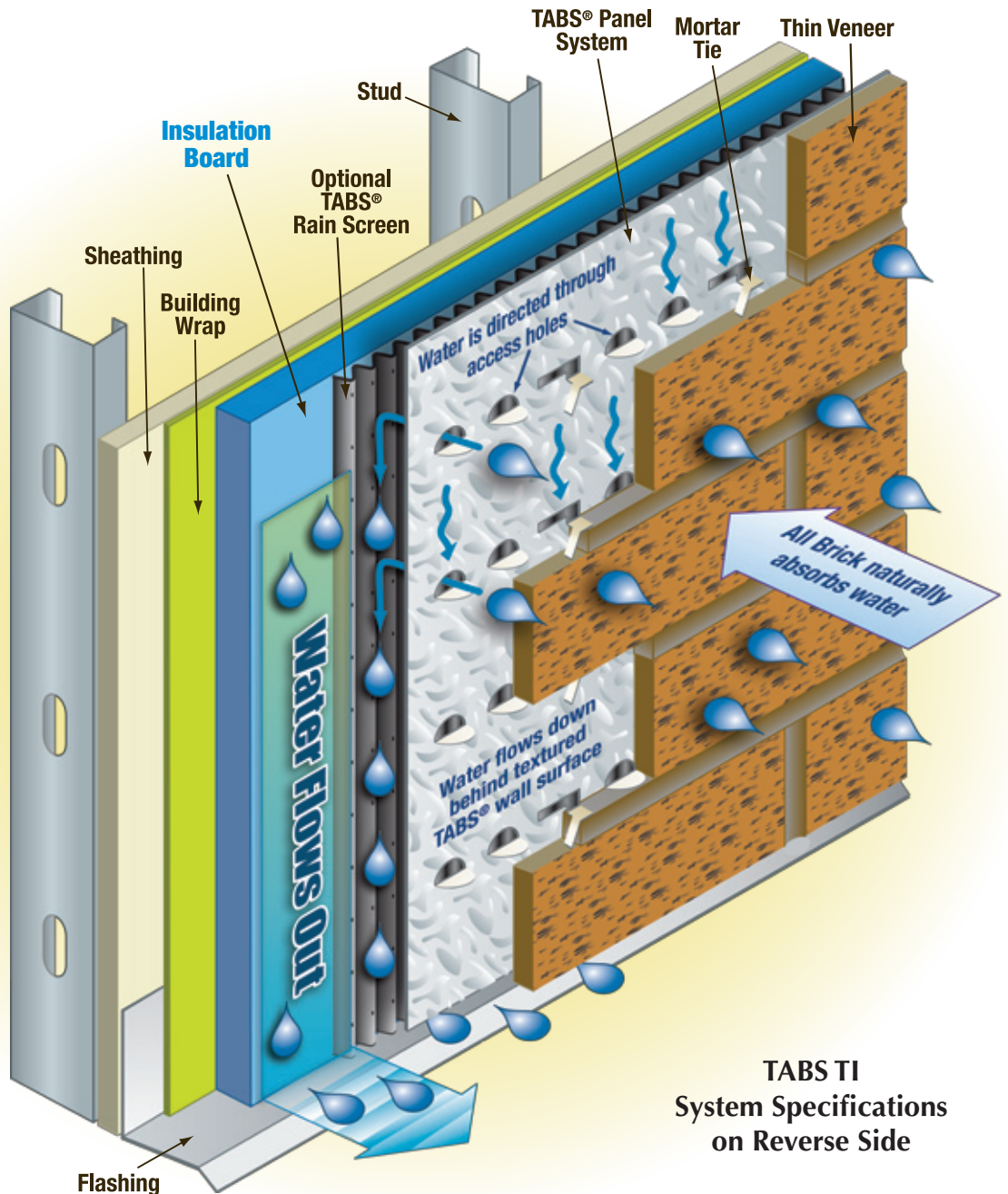
2900 Wilson Ave. SW
Suite 301
Grandville, MI 49418
Phone 616.261.5656
Fax 616.261.5676

tabswall@sbcglobal.net
www.tabswallsystems.com

TABS TI

**Offers Owners & Architects
An Exterior Veneer Finish System
Insulated up to R-10**

TABS TI - The industry's first thermal insulated cavity drainage system for thin brick, tile or stone.



**TABS TI
System Specifications
on Reverse Side**

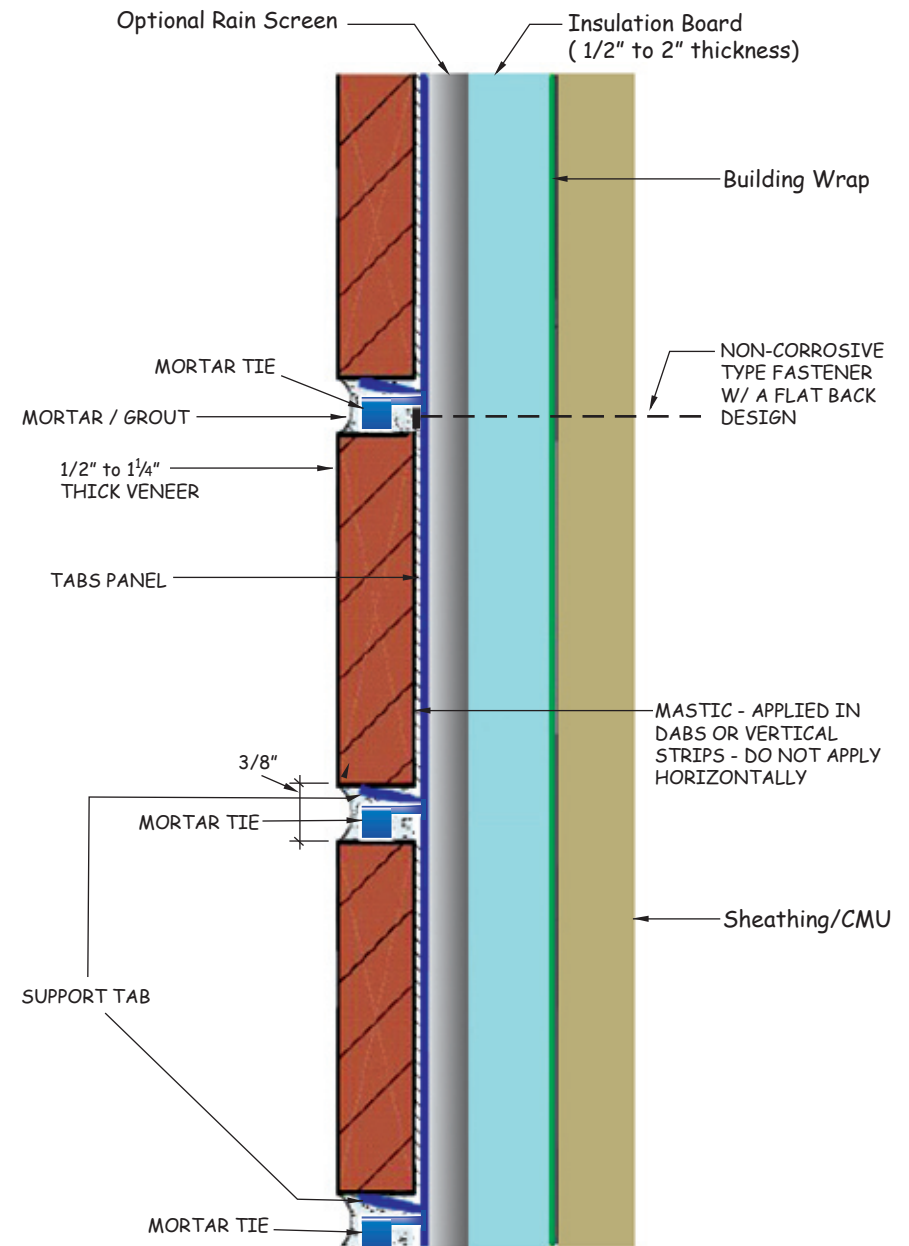


The Original Tabs System was introduced in the mid 1980's and was intended for both exterior & interior use. It was designed to match the thermal movement of the veneer and offered greater fastener pull through resistance. It also addressed the issue of proper spacing with its double tabbed design. In addition, the original Tabs Panel was embossed to make it one of the industry's first moisture control systems.

TABS TI & TABS TI "Plus" Thermal Insulated Panel Systems.

Structural Grade Steel, Mechanical Mortar Tie System, Moisture Control, (optional) Rain Screen, and 1/2" to 2" of Insulation to an R-10.

Product Description	Tabs TI	Tabs TI Plus
Intended Use	Heavy Duty	Heavy Duty
Quality of Steel Panel	Structural Grade	Structural Grade
Nominal Panel Thickness	.018 / 26 Gauge	.018 / 26 Gauge
Corrosion Protection	G90 Hot Dipped	G90 Hot Dipped
Panel Coating	Thermal Set	Thermal Set
Embossed Steel Panel	Included	Included
Thermal Insulated Protection	R-2.5 to R-10	R-2.5 to R-10
Patented Tabs II Tie System	Included	Included
Mortar Mix	Type "S"	Type "S"
Mortar Additive	Tabs II	Tabs II
Adhesive	Tabs II	Tabs II
Fasteners	Non-Corrosive	Non-Corrosive
Warranty	Full Twenty Year	Full Twenty Year



TYPICAL WALL DETAIL WITH RIGID INSULATION